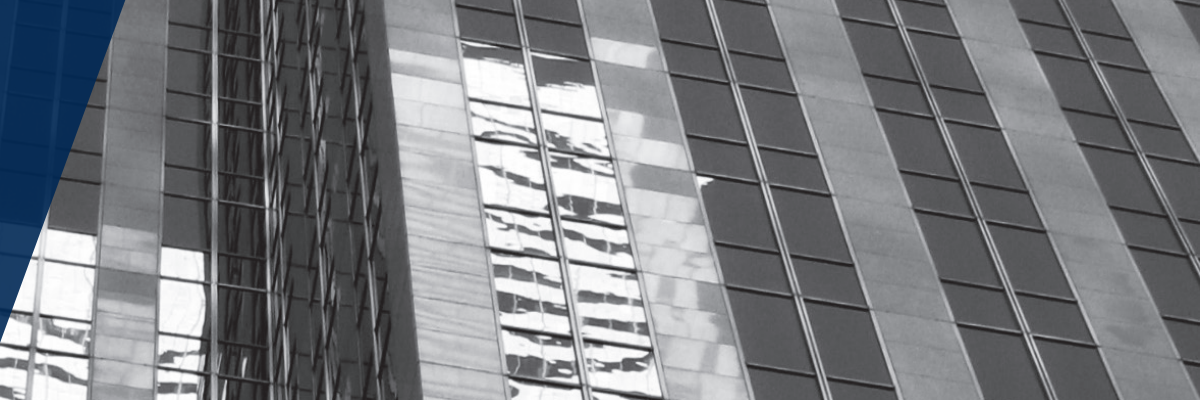


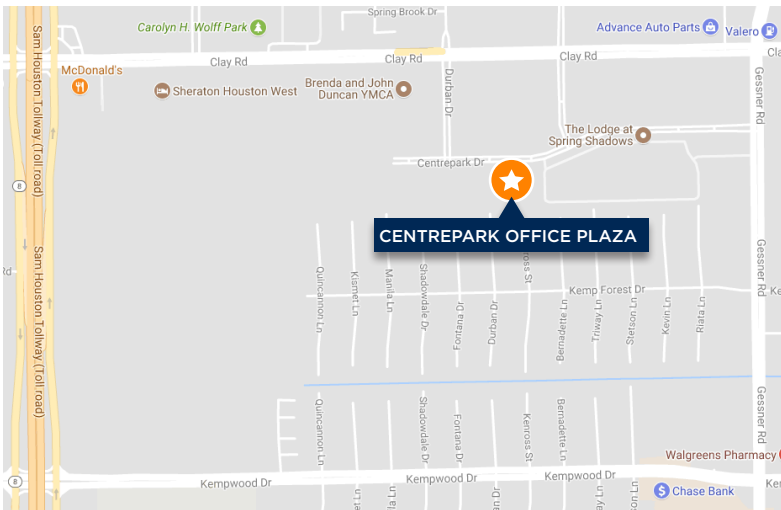


**FRITSCHÉ ANDERSON
REALTY PARTNERS**



OFFICE SPACE FOR LEASE

10355 CENTREPARK DR. / HOUSTON, TEXAS 77043



Building Address:	10355 Centrepark Dr.
Availability:	April 1, 2018
Available Space:	7,362 RSF 1 st Floor 2,976 RSF 2 nd Floor
Quoted Year 1 Rate:	\$19.50 PSF/MG.
Term:	3-5 Years
Parking:	Surface Parking

Features:

- Building facade is an EIFS and stone veneer
- Decorative roof towers
- Reflective, bronze insulated glass windows and doors
- Metal frame
- Bay depths of 50 & 55 ft
- Three double door front entrances per floor and three single rear doorways on level 1
- Two stairways and one (1) elevator

FOR MORE INFORMATION, PLEASE CONTACT:

TOMMY ALEXANDER

D / 713.275.3812

M / 713.569.0256

talexander@fritscheanderson.com

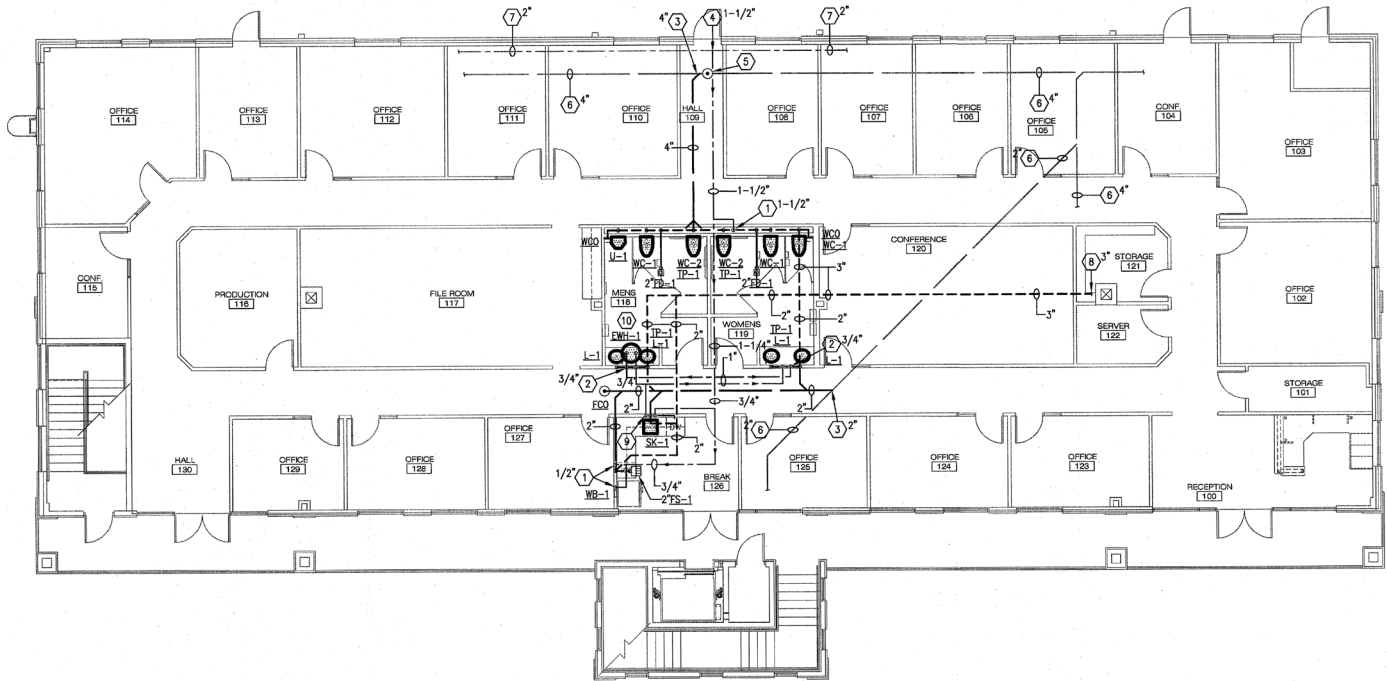


FRITSCHÉ ANDERSON
REALTY PARTNERS

OFFICE SPACE FOR LEASE

10355 CENTREPARK DR. / HOUSTON, TEXAS 77043 / FIRST FLOOR

7,362 RSF



FOR MORE INFORMATION, PLEASE CONTACT:

TOMMY ALEXANDER

D / 713.275.3812

M / 713.569.0256

talexander@fritscheanderson.com

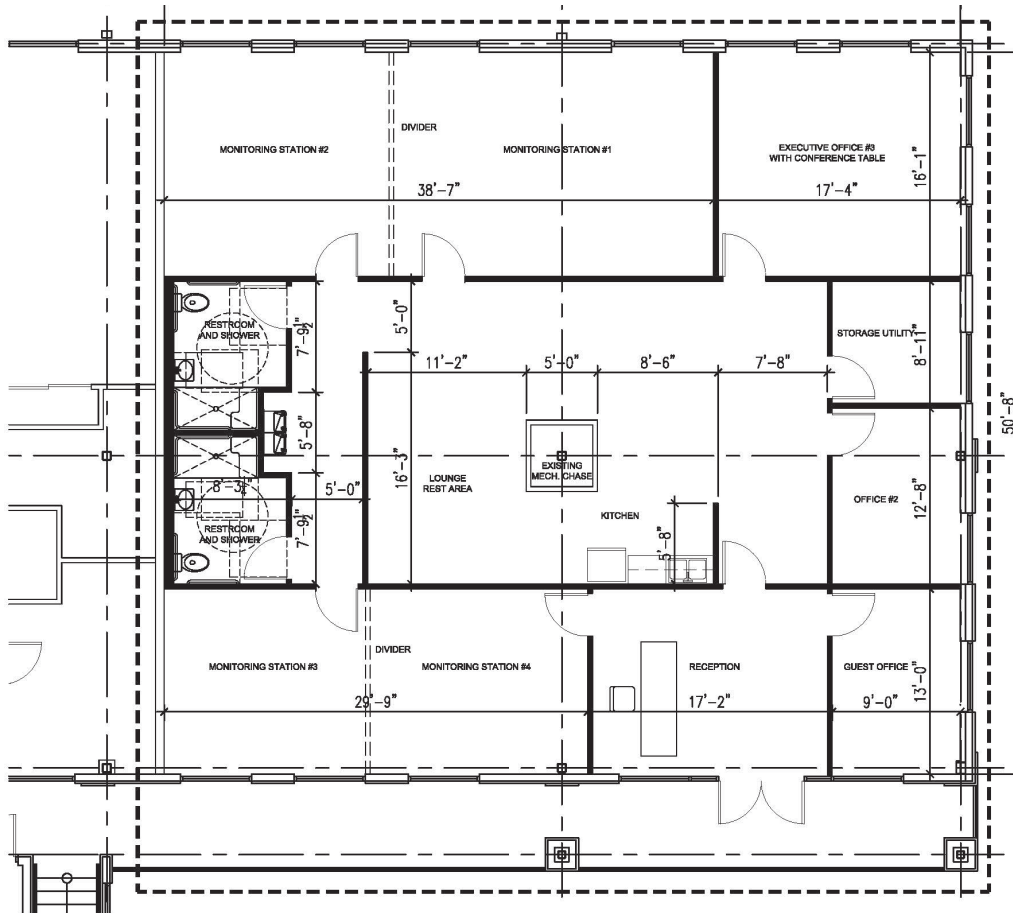


FRITSCHÉ ANDERSON
REALTY PARTNERS

OFFICE SPACE FOR LEASE

10355 CENTREPARK DR. / HOUSTON, TEXAS 77043 / SECOND FLOOR

2,976 RSF



FOR MORE INFORMATION, PLEASE CONTACT:

TOMMY ALEXANDER

D / 713.275.3812

M / 713.569.0256

talexander@fritscheanderson.com